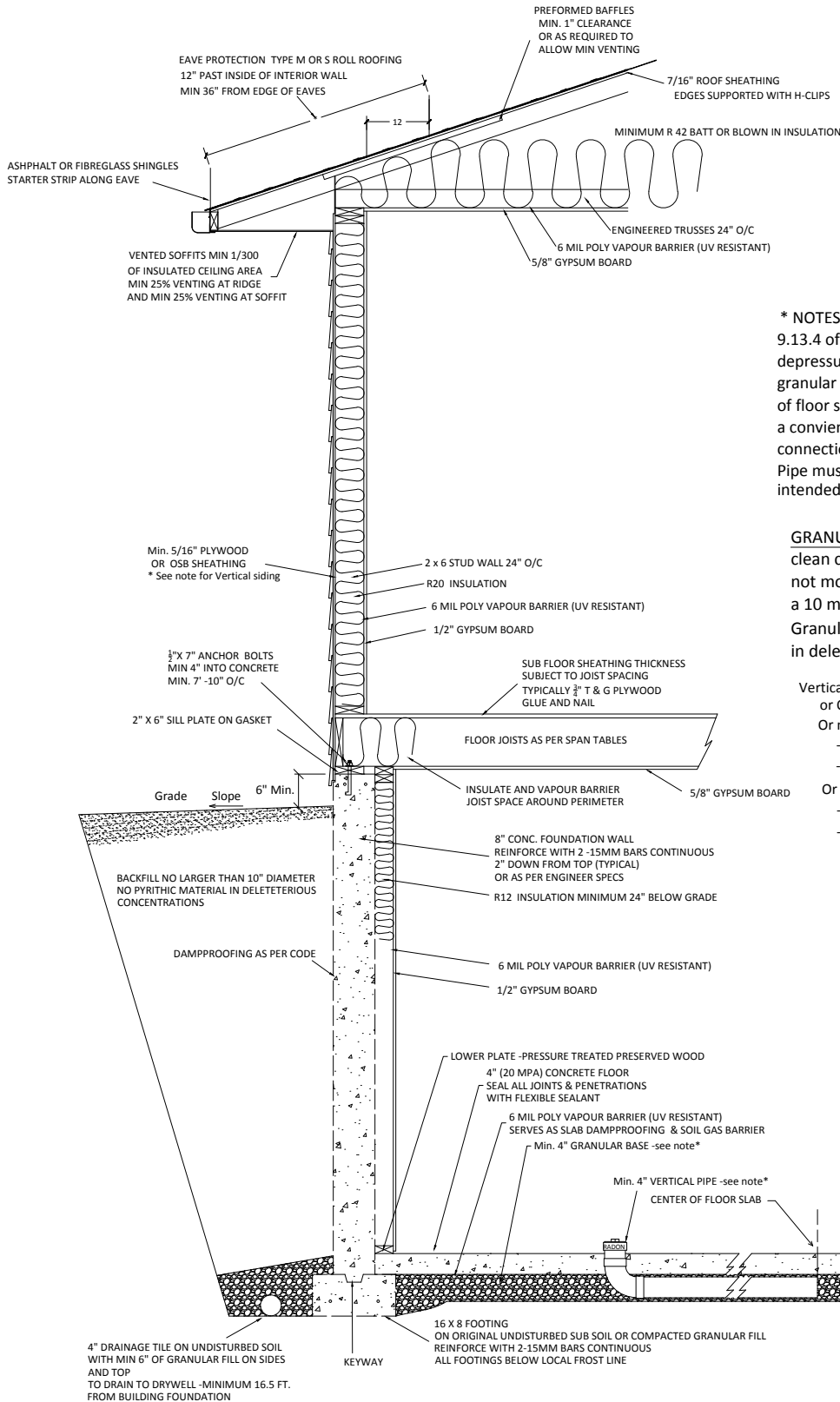


TYPICAL WALL SECTION & FOUNDATION

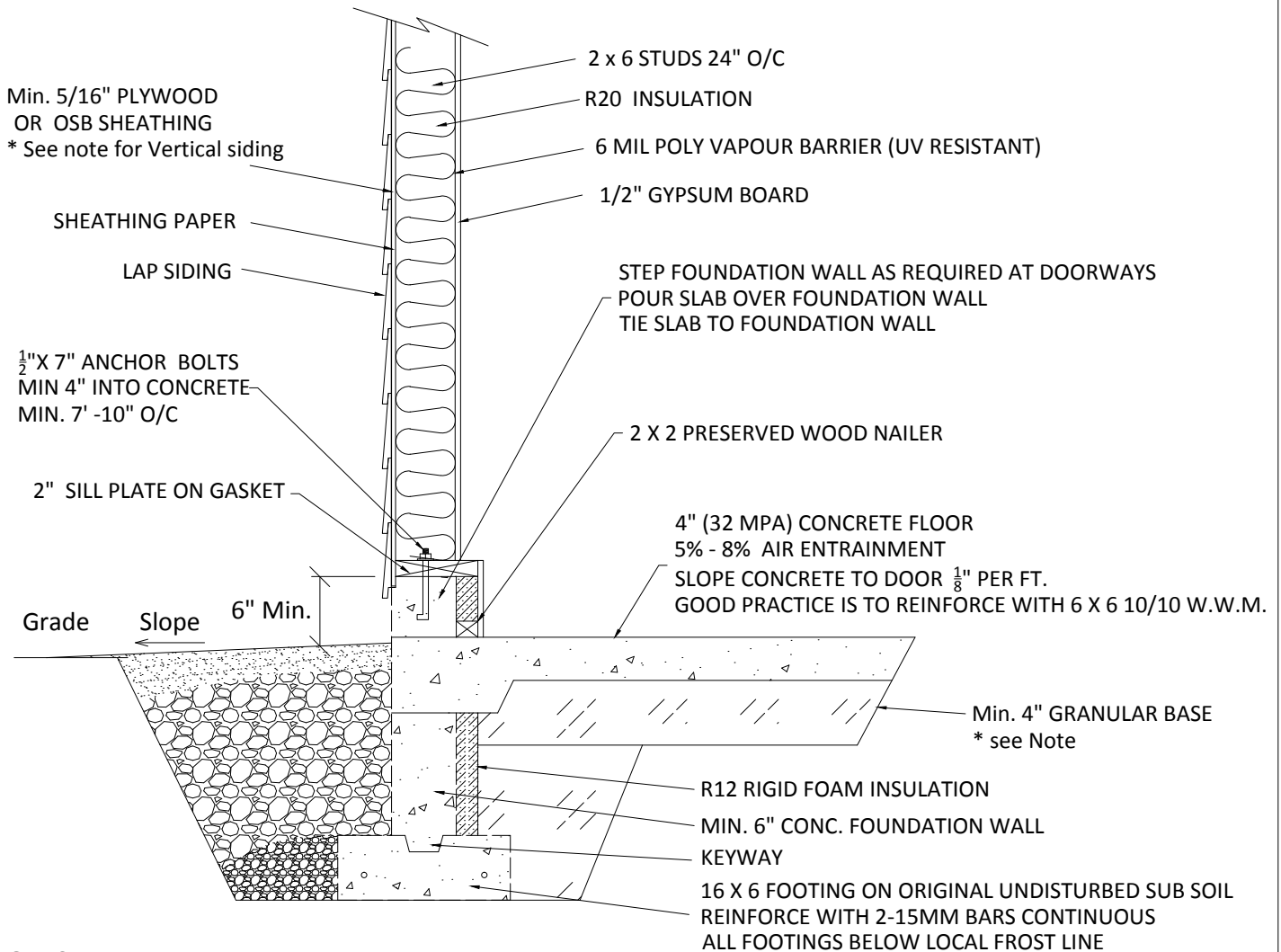


*** NOTES:**
 9.13.4 of BCBC requires a rough in for subfloor depressurization. Install a 4" Vertical Pipe into granular base and extend it continuous to center of floor slab. Vertical portion can come through in a convenient location which will allow for future connection to depressurization equipment if required. Pipe must be sealed at top and clearly marked with its intended purpose of removing radon gas.

GRANULAR BASE OR FILL-crushed stone or clean coarse aggregate, containing not more than 10% material which will pass a 10 mm sieve. Granular fill shall not contain Pyritic material in deleterious concentrations.

Vertical siding requires either a minimum 1/2" plywood or OSB sheathing as a base for nailing to, Or minimum 5/16" sheeting of plywood or OSB and -furring strips applied horizontally over sheathing, -minimum 3/4" x 1 1/2" min 24" O/C nailed to the studs Or solid blocking between studs, -minimum 1 1/2" x 1 1/2" material -min. 24" o/c securely nailed to studs

TYPICAL FOUNDATION AT ENTRY DOORS (Garage Floor)



*NOTES

Fill under slab needs to be clean coarse aggregate containing not more than 10% material which will pass a 10 mm sieve

Footings shall rest on undisturbed soil or rock or on compacted granular fill.

Granular fill shall not contain Pyritic material in deleterious concentrations.

Vertical siding requires either a minimum 1/2" plywood or OSB sheathing as a base for nailing to
Or minimum 5/16" sheeting of plywood or OSB and
-furring strips applied horizontally over sheathing,
-minimum 3/4" x 1 1/2" min 24" O/C nailed to the studs
or solid blocking between studs,
-minimum 1 1/2" x 1 1/2" material min. 24" o/c securely nailed to studs

Creation

-Design, Drafting & Consulting
www.creationdrafting.com
email: art@creationdrafting.com
Ph. 778-476-5799

Details:

Foundation Detail
Scale 3/4" = 1'

Copyright:

Copying or Printing this document is illegal without written consent from: Creation
-Design, Drafting & Consulting

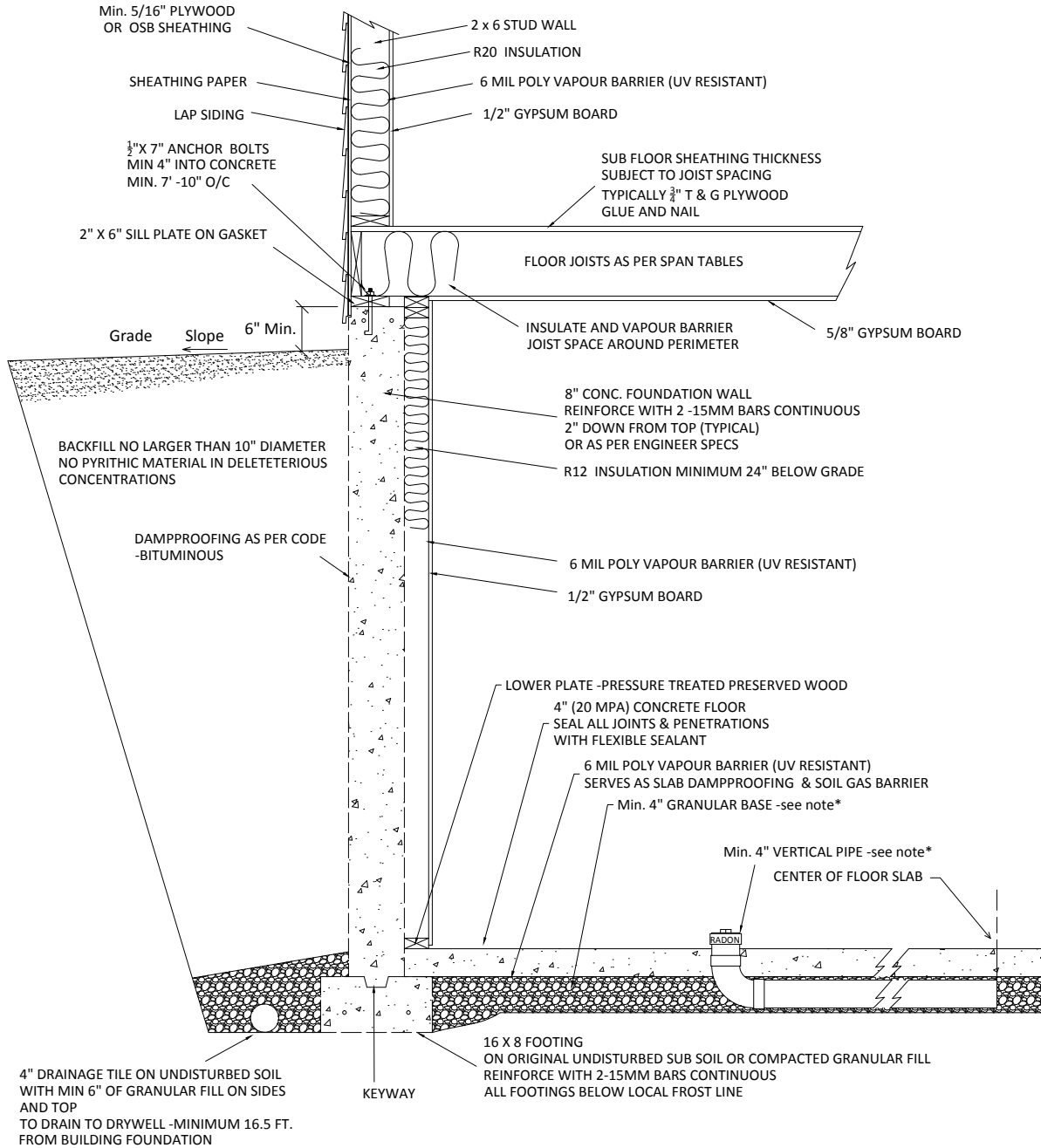
Rev #

Date

Page #

18/10/2012

TYPICAL BASEMENT FOUNDATION WALL



*** NOTES:**

9.13.4 of BCBC requires a rough in for subfloor depressurization. Install a 4" Vertical Pipe into granular base and extend it continuous to center of floor slab. Vertical portion can come through in a convenient location which will allow for future connection to depressurization equipment if required. Pipe must be sealed at top and clearly marked with its intended purpose of removing radon gas.

GRANULAR BASE OR FILL-crushed stone or clean coarse aggregate, containing not more than 10% material which will pass a 10 mm sieve.

Granular fill shall not contain Pyritic material in deleterious concentrations.