

**STEEL FRAME  
 ELEVATION VIEW OF PASSENGER SIDE**

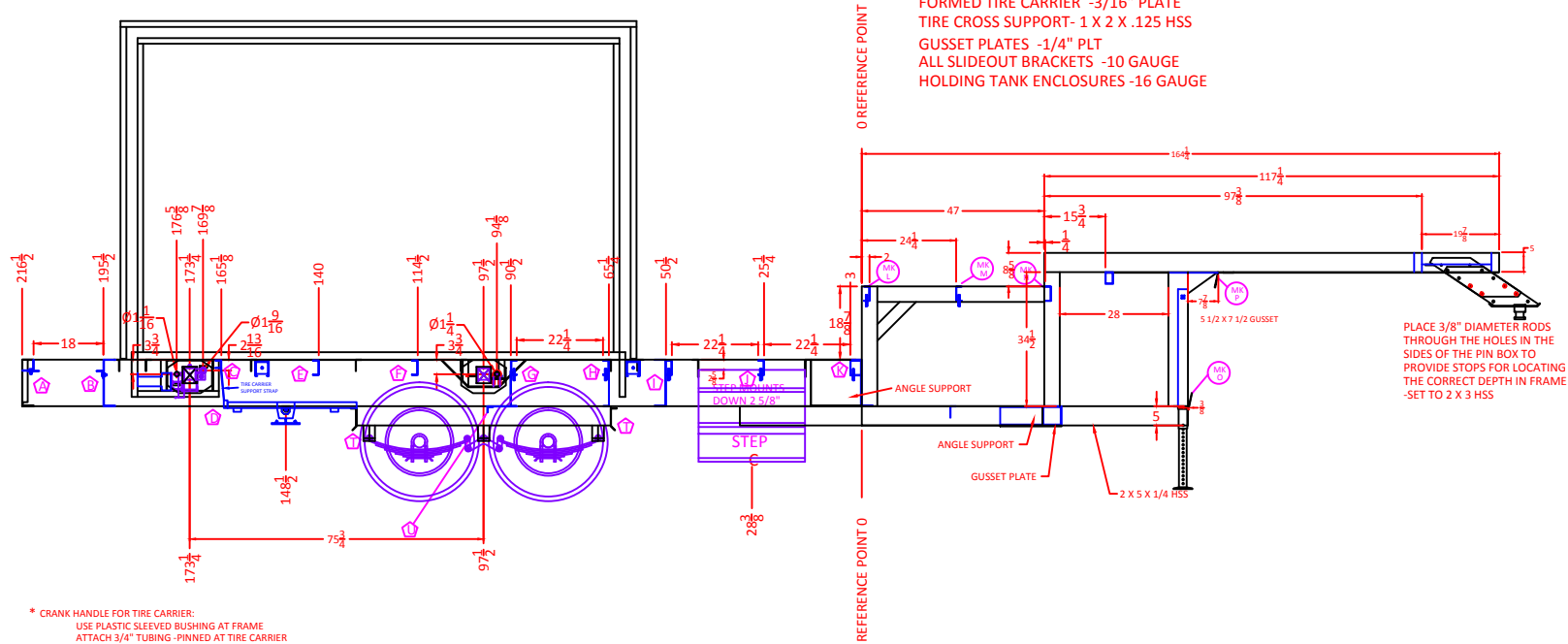
ABOVE FLOOR SLIDE:  
 RECOMMENDED HOLE CUTOUT FOR  
 POWER GEAR SLIDE SYSTEM  
 3 3/4 X 4 1/4  
 1 7/8" DOWN AND 173 1/4" AND 97 1/2" TO CENTER  
 WELD GUSSET PLATE TO OUTER FACE

ON DRIVE TUBE:  
 3/4" STOP ROD, MOUNT AND DOUBLE NUTS NEEDED FOR OUT POSITION  
 1" 1/5 DIA. PIPE AND MOUNT NEEDED FOR WIRE CHANNEL  
 ALSO STOP BOLT AND MOUNTS NEEDED FOR IN POSITION

ON IDLER TUBE:  
 REQUIRES PROPANE BLACK IRON MOUNT BRACKET  
 WE WILL SUPPLY CABLE CLAMP

**THICKNESS OF STEEL FRAME COMPONENTS:**

3 X 12 FORMED MAIN MEMBERS -3/16" PLT  
 3 X 12 "Z" -FORMED FRONT CROSSMEMBERS -1/4" PLT  
 3 X 12 FORMED CROSS MEMBERS AND 3 X 12 OUTRIGGERS -10 GAUGE  
 OTHER OUTRIGGERS -12 GAUGE  
 ALL BUNK SUPPORTS AND UNDER BUNK WALL SUPPORTS -10 GAUGE  
 TANK SUPPORTS AND ALL TANK SUPPORT CROSS MEMBERS -10 GAUGE  
 ALL OTHER 1 1/2" X 3" CROSS SUPPORTS -12 GAUGE  
 WALL TUBING -HSS 1 X 1 1/2 -.080 WALL  
 ALL 2 X 4 HSS -.250 WALL  
 ALL 2 X 5 HSS -.250 WALL  
 FORMED TIRE CARRIER -3/16" PLATE  
 TIRE CROSS SUPPORT- 1 X 2 X .125 HSS  
 GUSSET PLATES -1/4" PLT  
 ALL SLIDEOUT BRACKETS -10 GAUGE  
 HOLDING TANK ENCLOSURES -16 GAUGE



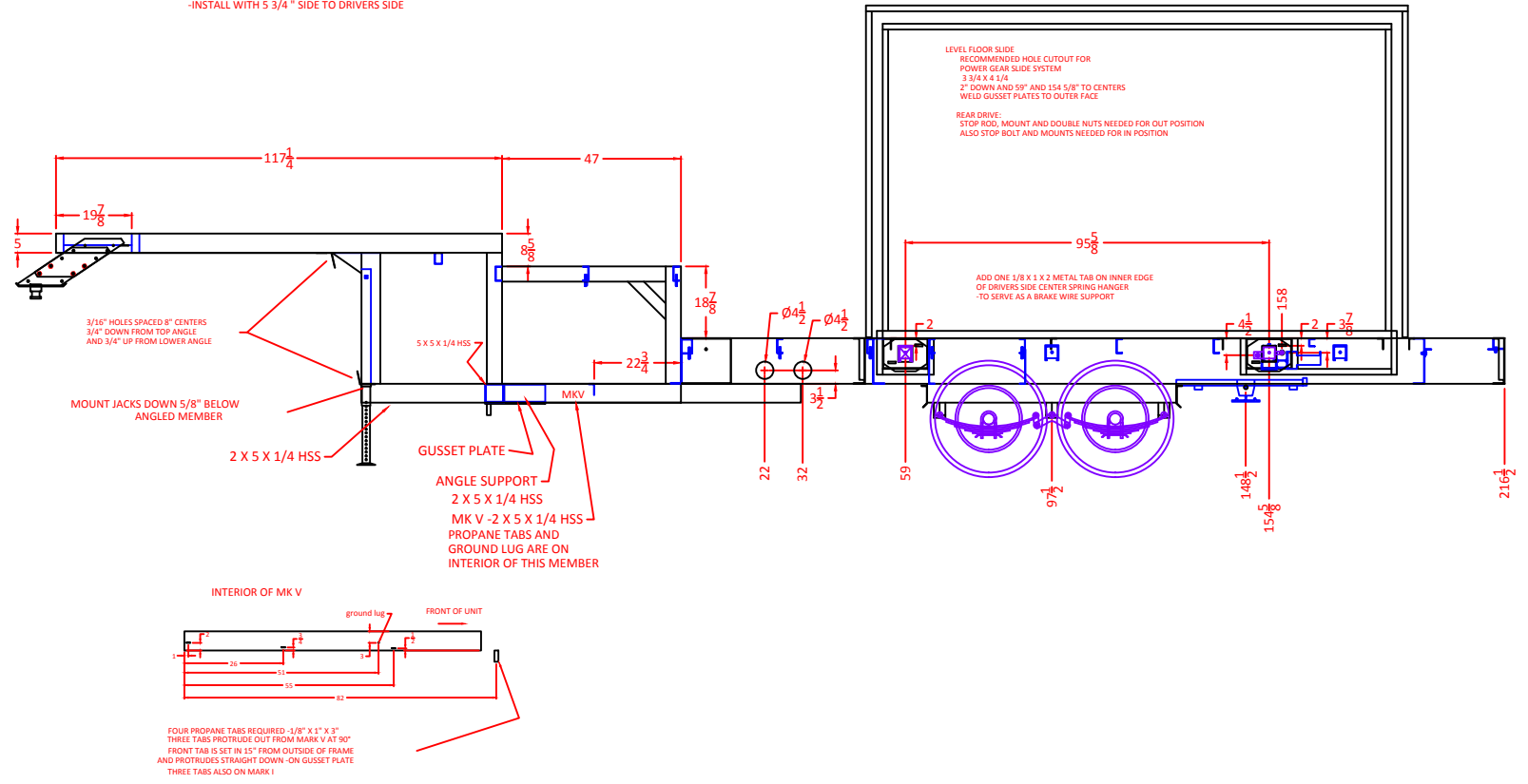
PLACE 3/8" DIAMETER RODS  
 THROUGH THE HOLES IN THE  
 SIDES OF THE PIN BOX TO  
 PROVIDE STOPS FOR LOCATING  
 THE CORRECT DEPTH IN FRAME  
 -SET TO 2 X 3 HSS

\* CRANK HANDLE FOR TIRE CARRIER:  
 USE PLASTIC SLEEVED BUSHING AT FRAME  
 ATTACH 3/4" TUBING -PINNED AT TIRE CARRIER  
 TUBING 3/4" X 26" LONG  
 SEE SEPARATE DRAWING OF TIRE CARRIER  
 WHICH SHOWS DETAIL OF TUBE OUTER END  
 TIRE CARRIER WILL USE SAME CRANK AS LANDING GEAR

MOUNT STABILIZER JACKS ON  
 AN ANGLE SO THEY CLEAR  
 SPARE TIRE  
 \*\*LEAVE SPACE FOR UNDERBELLY

**STEEL FRAME  
ELEVATION VIEW OF DRIVERS SIDE**

- 1/8" CAMBER IN FRAME
- FOUR TANK CRADLES
- INSTALL WITH 5 3/4" SIDE TO DRIVERS SIDE



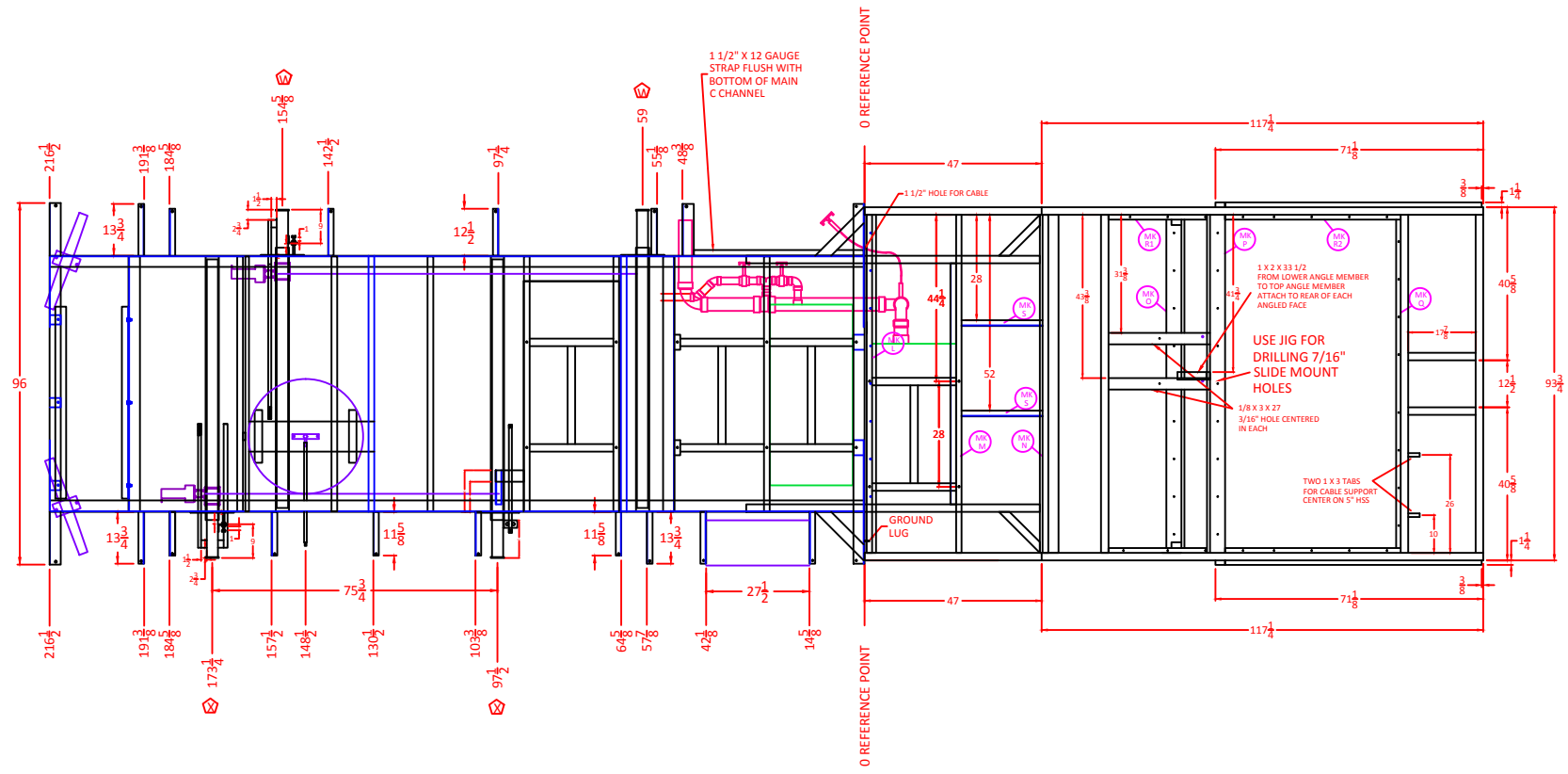
Client

Details:  
**5th Wheel Travel  
Trailer Frame**

**Creation**  
-Design, Drafting & Consulting  
[www.creationdrafting.com](http://www.creationdrafting.com)  
email: [art@creationdrafting.com](mailto:art@creationdrafting.com)  
Ph. 778-476-5799

STEEL FRAME  
PLAN VIEW

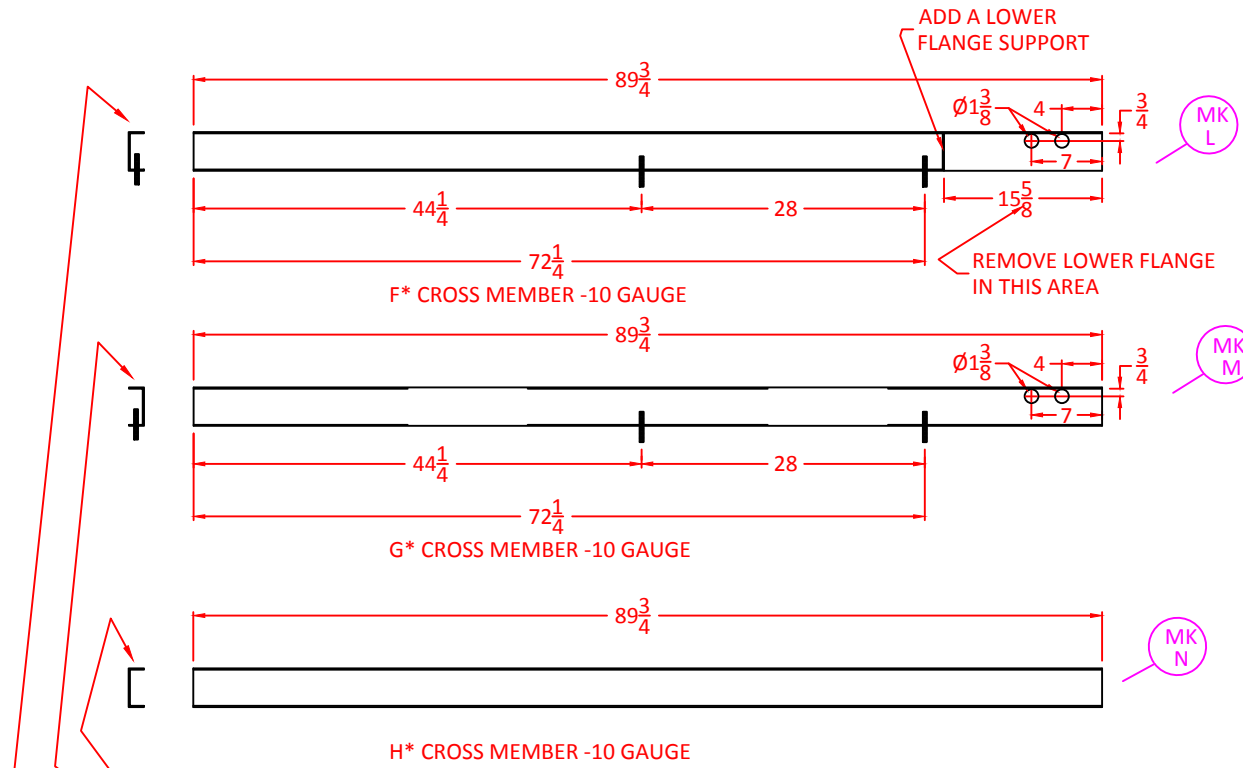
NOTE: Ⓢ - LEVEL FLOOR DRIVE TUBES REQUIRE TO BE WELDED IN ON ANGLE -SEE SPECIAL DRAWING  
 NOTE: Ⓢ - ABOVE FLOOR SLIDE -DRIVE TUBES REQUIRE TO BE WELDED IN HORIZONTALLY -SEE SPECIAL DRAWING



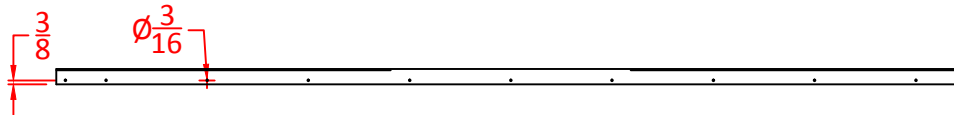
Client

Details:  
**5th Wheel Travel  
 Trailer Frame**

Creation  
 -Design, Drafting & Consulting  
 www.creationdrafting.com  
 email: art@creationdrafting.com  
 Ph. 778-476-5799



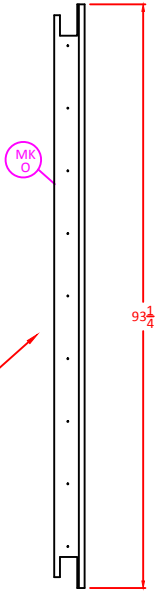
ADD 3/16" HOLES 10" ON CENTER IN TOP FLANGE OF  
 MARK F, MARK G AND MARK H  
 HOLES SHOULD BE CENTERED 3/8" FROM OPEN SIDE OF "C"



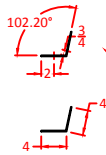
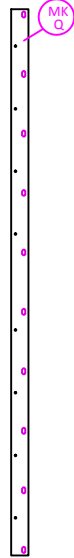
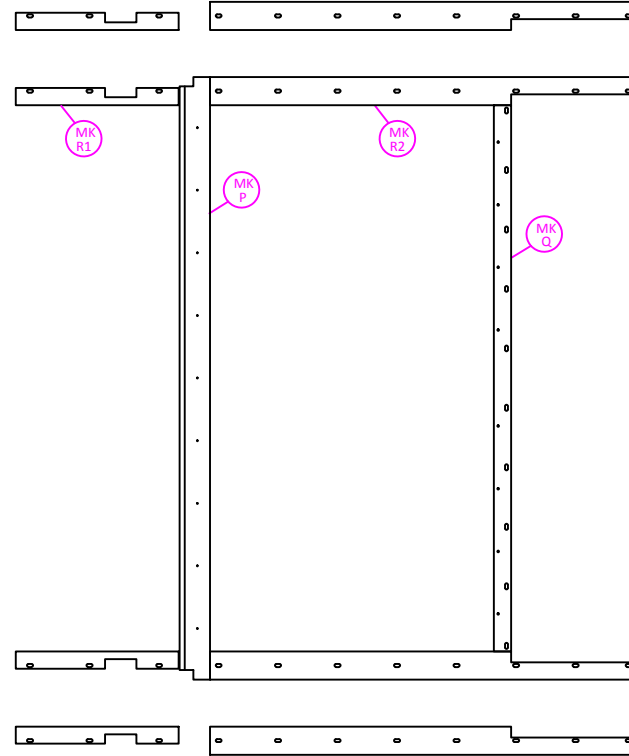
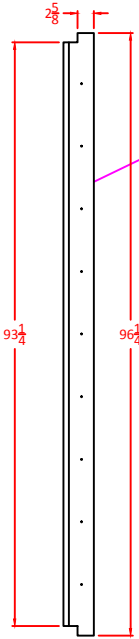
UNDER BUNK WALL SUPPORTS -12 GAUGE

LOWER ANGLED MEMBER

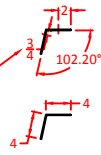
UPPER ANGLED MEMBER



5/32" HOLES -10" ON CENTER  
-CENTERED ON HORIZONTAL FLANGE



3/16" HOLES -10" ON CENTER  
-3/4" FROM BEND ON ANGLED  
FLANGES



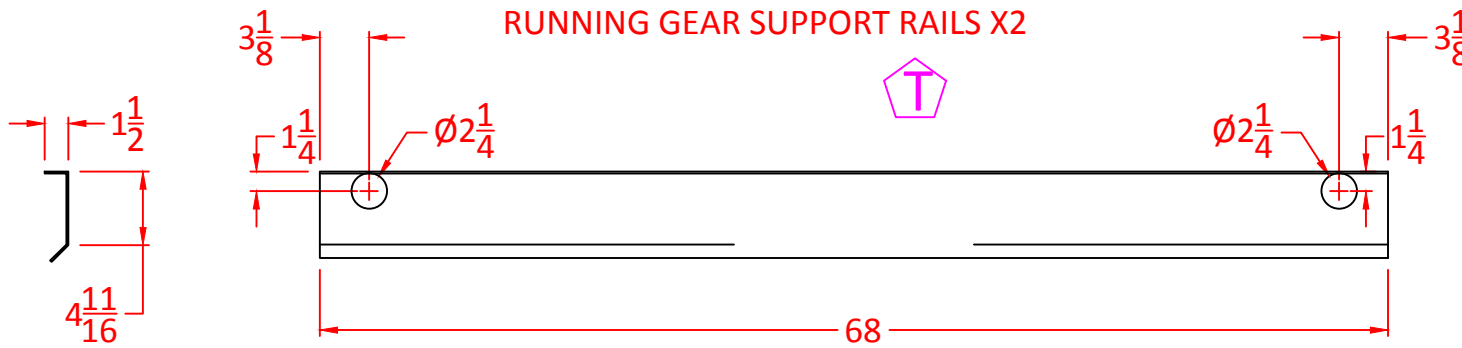
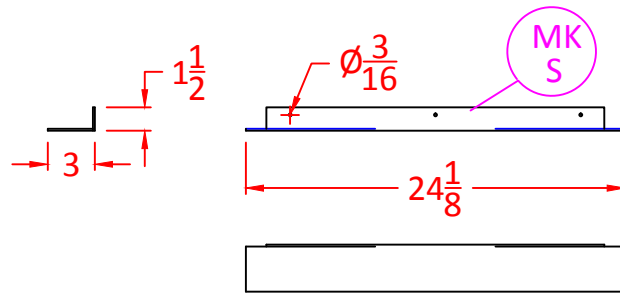
3/16" HOLES -10" ON CENTER  
-CENTERED ON HORIZONTAL  
FLANGE

Client

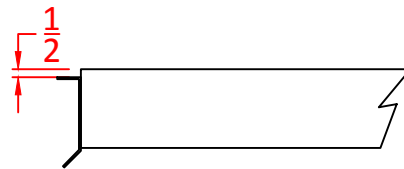
5th Wheel Travel  
Trailer Frame

Details:

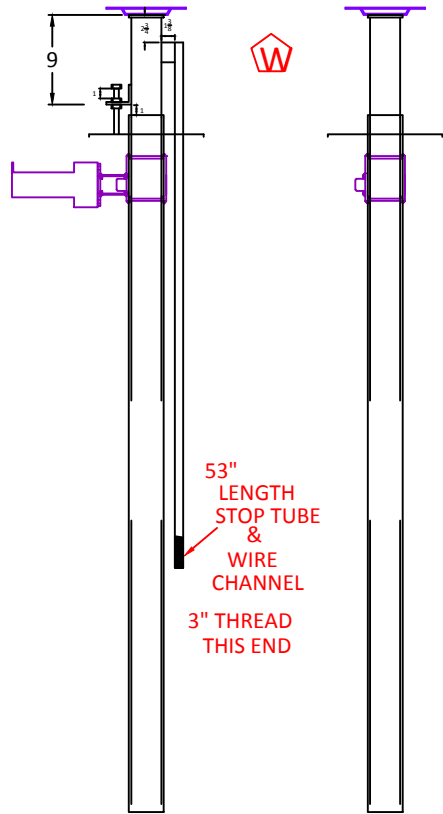
Creation  
-Design, Drafting & Consulting  
www.creationdrafting.com  
email: art@creationdrafting.com  
Ph. 778-476-5799



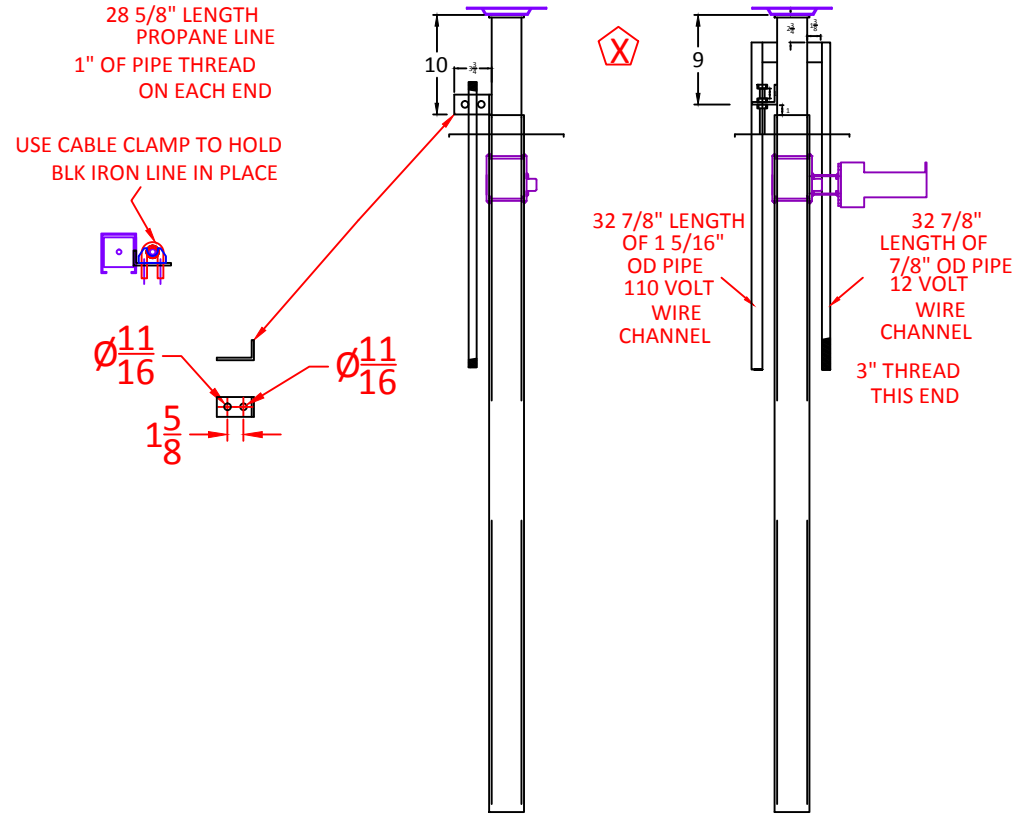
**MOUNT  $\frac{1}{2}$ " LOWER THEN TOP OF HANGER SUPPORT RAIL**



**DRIVERS SIDE -DRIVE TUBE AND IDLER TUBES  
LEVEL FLOOR SLIDE -DRIVE TUBES ON ANGLE**



**PASSENGERS SIDE -DRIVE AND IDLER TUBES  
ABOVE FLOOR SLIDE -DRIVE TUBES LEVEL**



Page #

Date

Rev #

09/10/2012

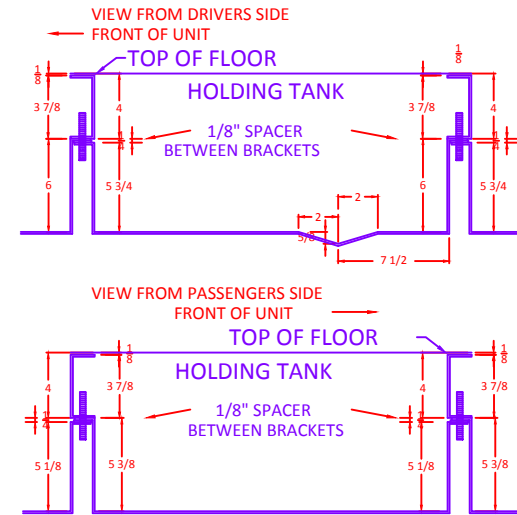
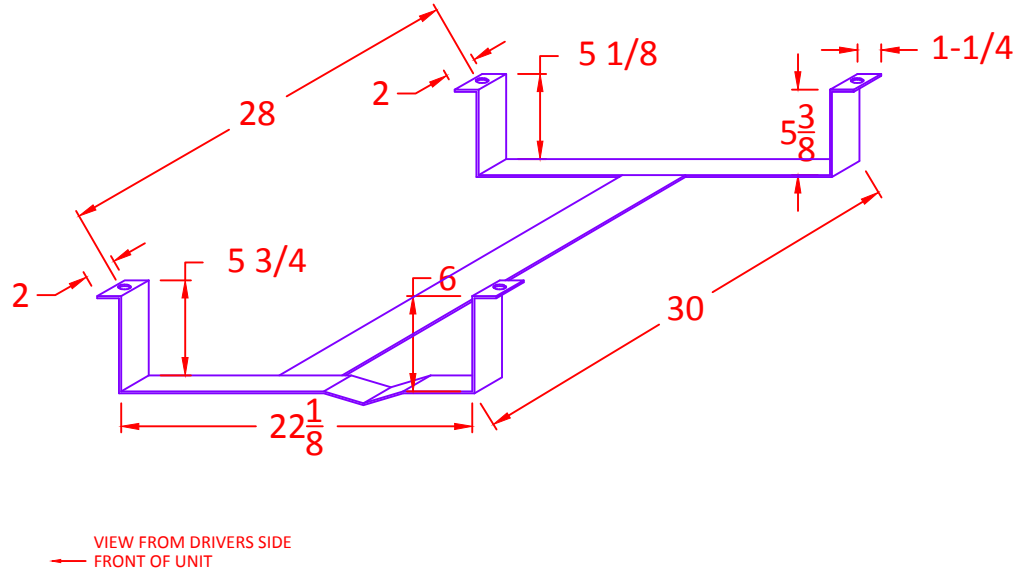
Client

Details:

**5th Wheel Travel  
Trailer Frame**

**Creation**  
-Design, Drafting & Consulting  
www.creationdrafting.com  
email: art@creationdrafting.com  
Ph. 778-476-5799

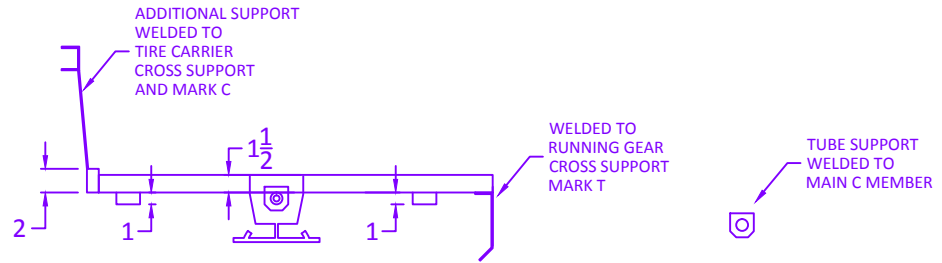
**TANK CRADLES -FOUR REQUIRED**  
**-INSTALL WITH 5 3/4 " SIDE TO DRIVERS SIDE**



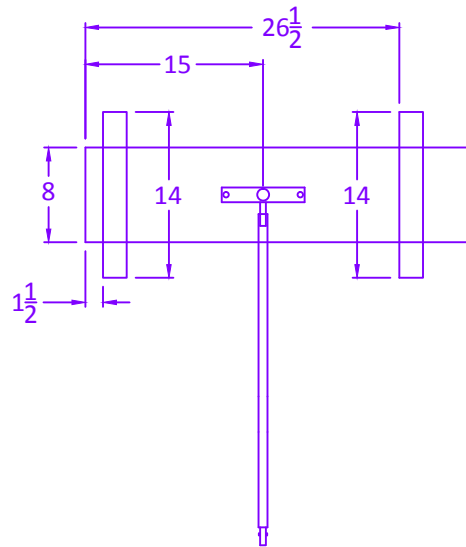


SPARE TIRE CARRIER

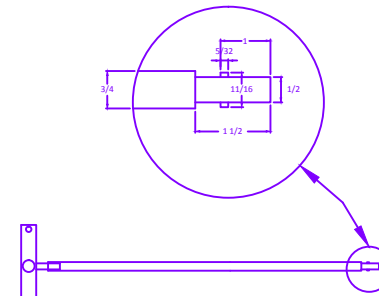
VIEW FROM PASSENGER SIDE



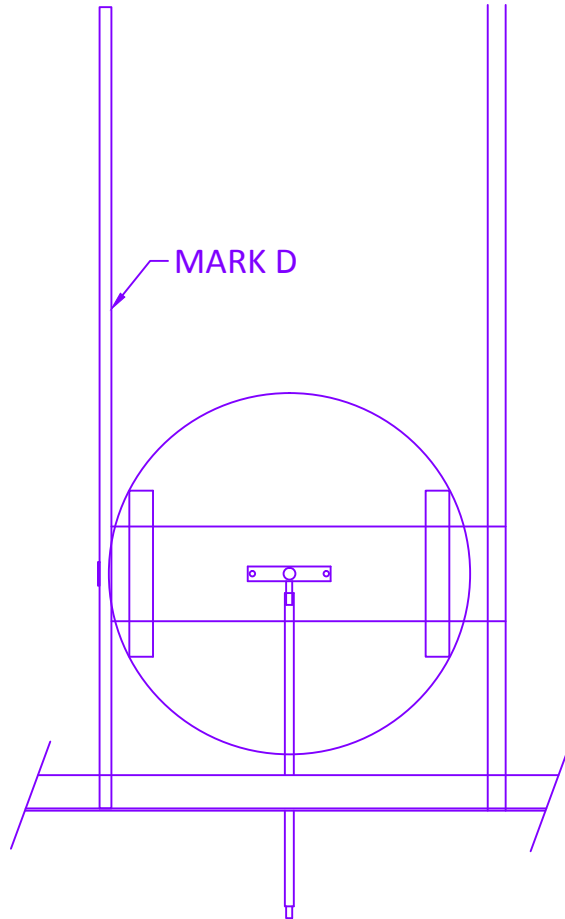
TOP VIEW



END VIEW



3/4" x 25" tube pinned at tire carrier and 1/2" rod with 5/32" pin as shown at outer end will use same crank handle as landing gear



MARK D 1 X 2 HSS

1/8 X 2 SUPPORT STRAP



NOTCHED FOR CHANNEL ON EACH END

Page #

Date

Rev #

09/10/2012

Client

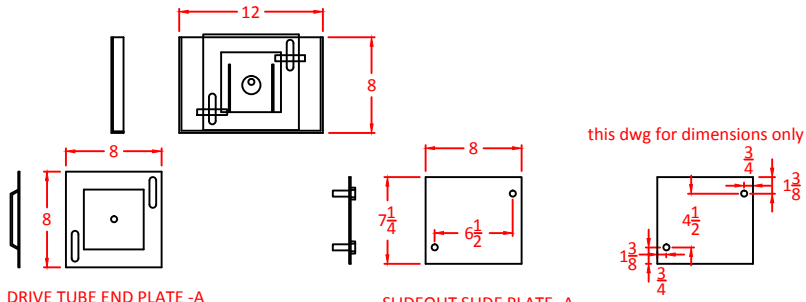
Details:

5th Wheel Travel Trailer Frame

Creation

-Design, Drafting & Consulting  
www.creationdrafting.com  
email: art@creationdrafting.com  
Ph. 778-476-5799

SLIDE BRACKET SYSTEM  
POWER GEAR SLIDE SYSTEM  
THREE OF EACH REQUIRED

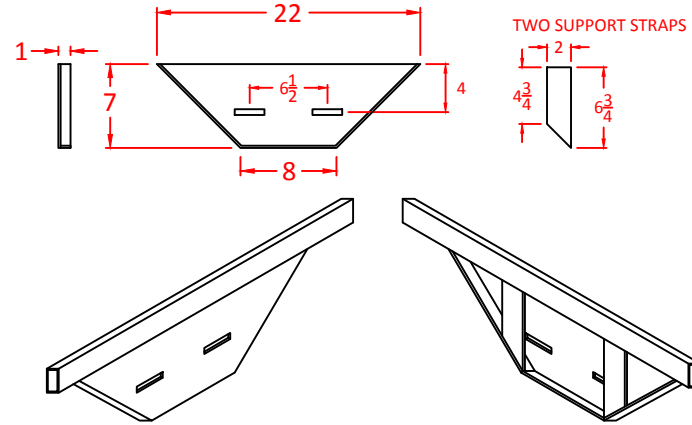


DRIVE TUBE END PLATE -A

SLIDEOUT SLIDE PLATE -A  
WITH TWO 1/2" X 1 1/2" BOLTS  
WELDED THROUGH HOLES

this dwg for dimensions only

3/16" PLATE  
SLOTTED AND FORMED AND  
STICED TO LOWER 1 X 2 SLIDEOUT RAIL  
TWO 3/16" X 2" STRAPS WELDED  
ON BACK SIDE



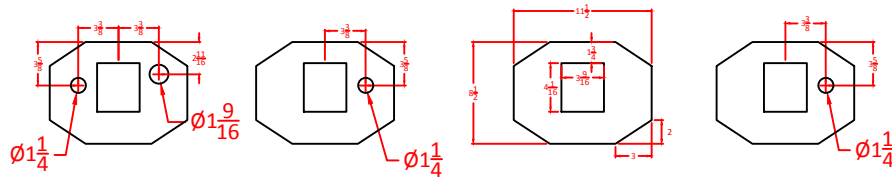
TWO SUPPORT STRAPS

1/4" gusset plates  
-used at slide cutout  
ONE OF EACH REQUIRED PER UNIT

PASSENGER SIDE  
REAR FRONT

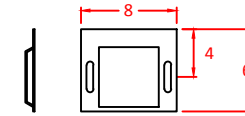
DRIVER SIDE  
FRONT

REAR

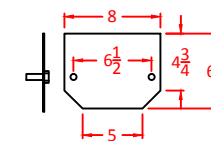


SLIDE BRACKET SYSTEM OVER WHEEL WELL  
ONE OF EACH REQUIRED

DRIVE TUBE END PLATE -B



SLIDEOUT SLIDE PLATE -B  
WITH TWO 1/2" X 1 1/2" BOLTS  
WELDED THROUGH HOLES

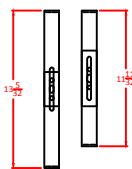
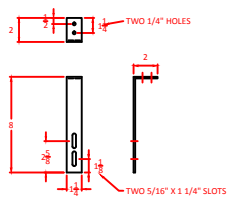


SKIRT BRACKET

THREE SETS PER UNIT -PAINTED BLACK  
10 GAUGE STEEL

TWO 1/4" X 3/4" BOLTS,  
NUTS AND LOCKWASHERS

ASSEMBLY:



Page #	
Date	
Rev #	
	09/10/2012

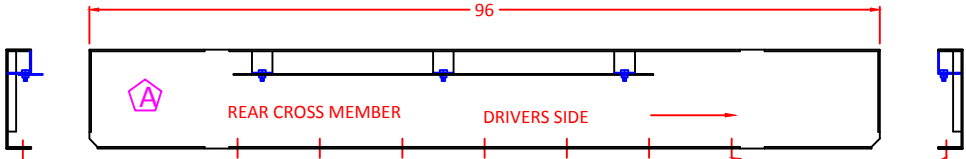
Client

Details:

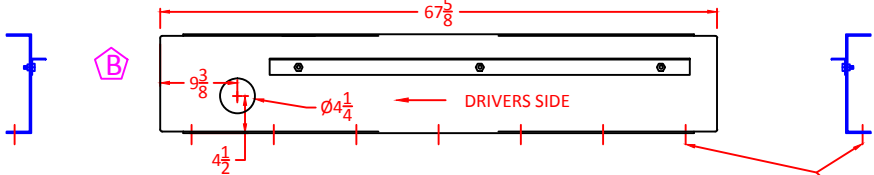
5th Wheel Travel  
Trailer Frame

Creation  
-Design, Drafting & Consulting  
www.creationdrafting.com  
email: art@creationdrafting.com  
Ph. 778-476-5799

# Cross Members

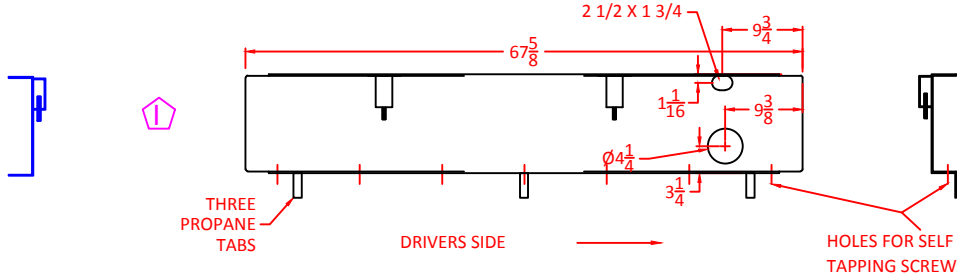


HOLES FOR SELF TAPPING SCREWS

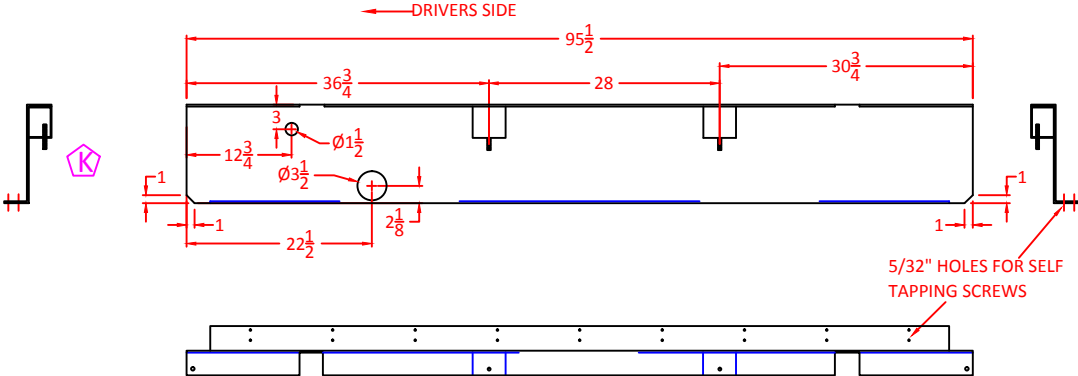


HOLES FOR SELF TAPPING SCREWS

- C** 1 1/2 X 2 X 67 5/8 "C" CHANNEL CROSS MEMBER
- D** 1 X 2 X 67 5/8 -3/16" HSS CROSS MEMBER -TIRE SUPPORT
- E** **F** 1 1/2 X 3 13/16 X 67 5/8 "C" CHANNEL CROSS MEMBERS



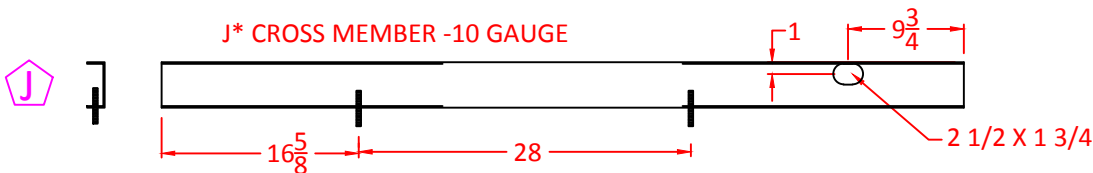
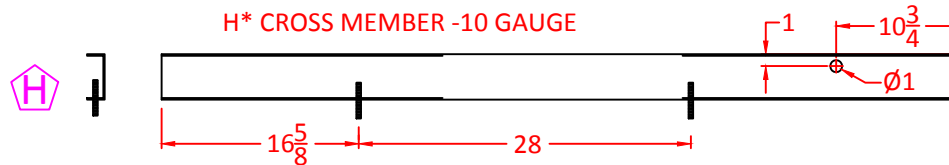
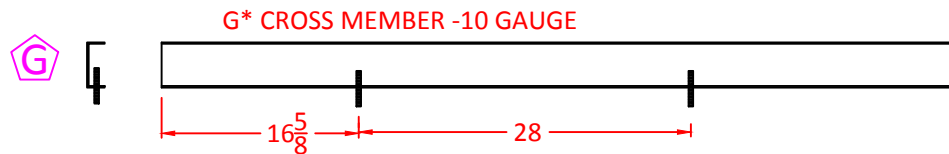
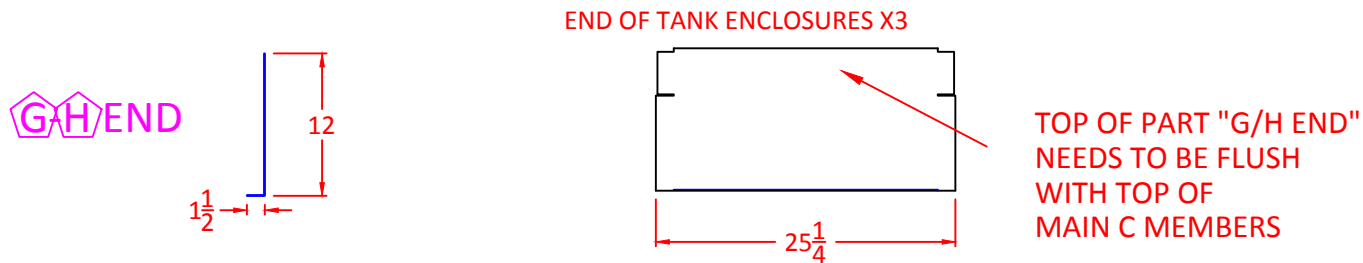
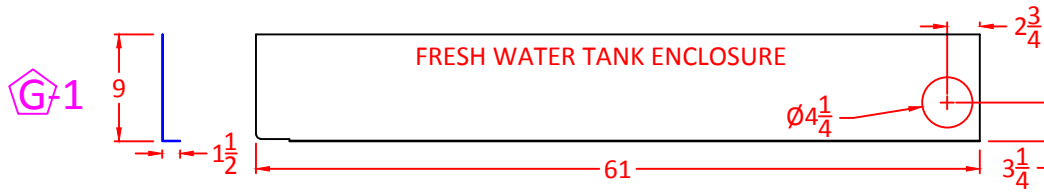
HOLES FOR SELF TAPPING SCREWS



5/32" HOLES FOR SELF TAPPING SCREWS

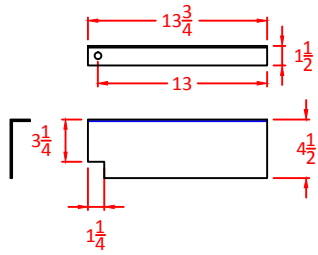
# Holding Tank Enclosures

G-1, H-1 & G/H END ARE ALL 16 GAUGE  
FRESH WATER TANK ENCLOSURE

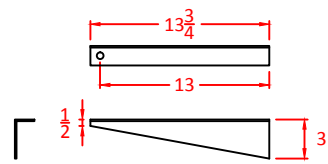


LEFT - RIGHT WOULD BE A MIRROR IMAGE

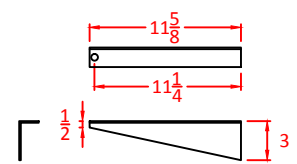
STEP OUTRIGGER  
STEP MOUNTS DOWN 2 5/8"



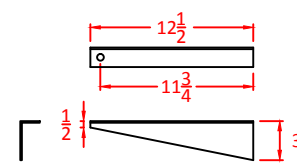
REGULAR OUTRIGGER  
FOR 1" WALL CORE



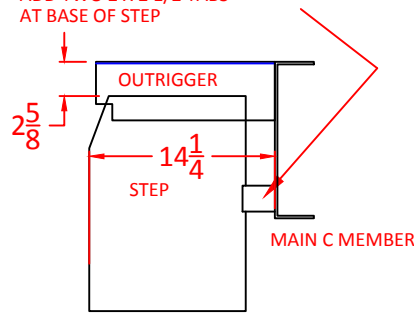
ABOVE FLOOR SLIDE  
OUTRIGGER  
FOR 1" WALL CORE



LEVEL FLOOR SLIDE  
OUTRIGGER  
FOR 1" WALL CORE

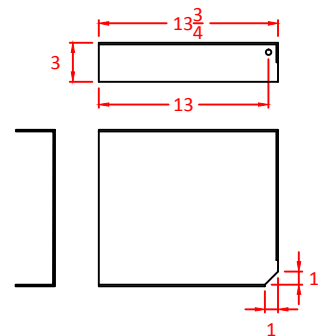


ADD TWO 2 X 2 1/2 TABS  
AT BASE OF STEP

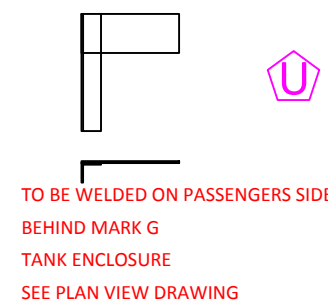


SET STEP 2 5/8" DOWN  
14 1/4" TO OUTSIDE EDGE

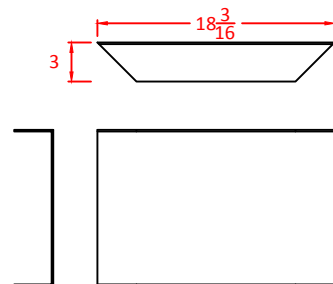
DRIVER SIDE  
CARGO ENCLOSURE  
OUTRIGGER  
FOR 1" WALL CORE



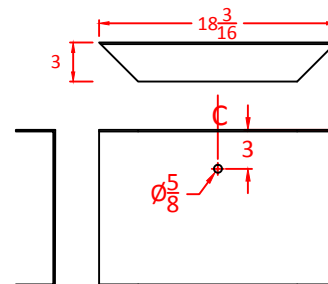
AND ANGLE  
PROPANE LINE SUPPORT  
1 1/2 X 1 1/2 X 9 ANGLE  
AND 3 X 7 1/2 FLAT PLATE

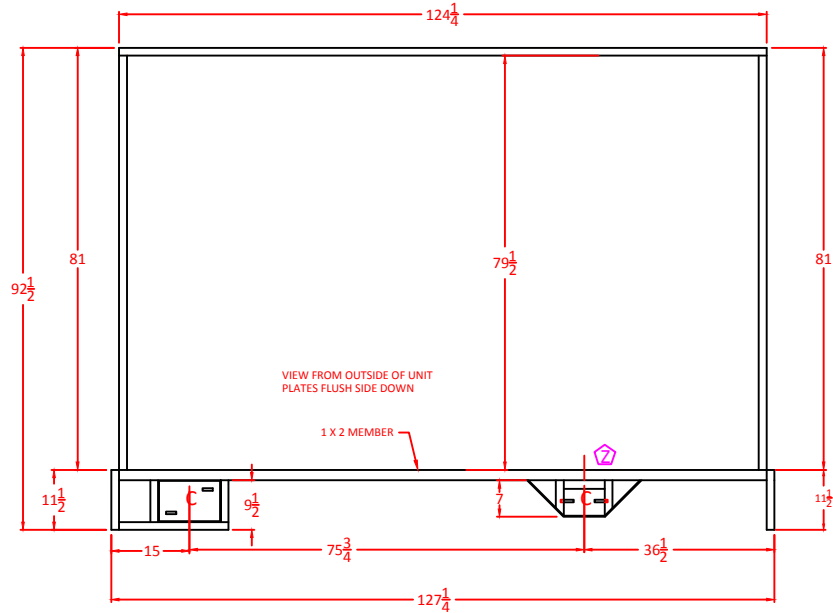
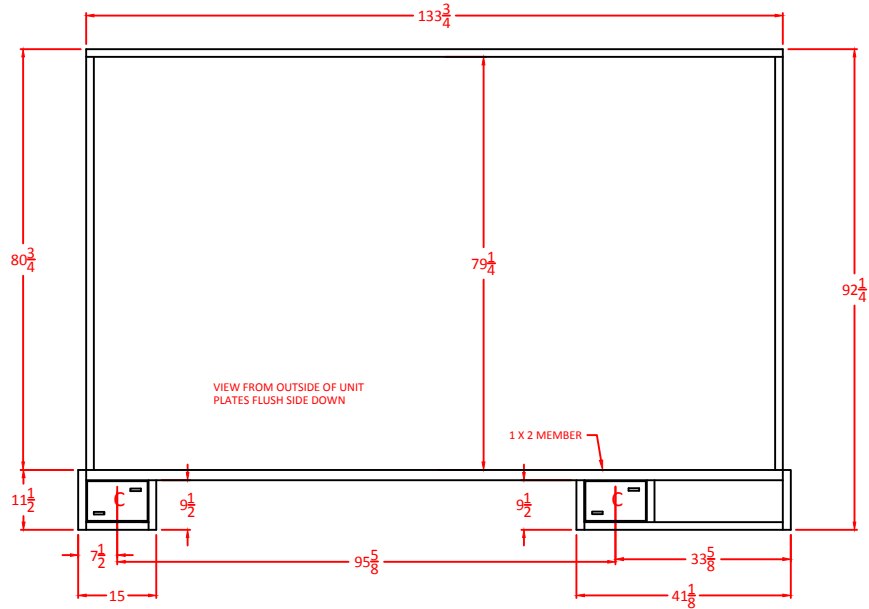
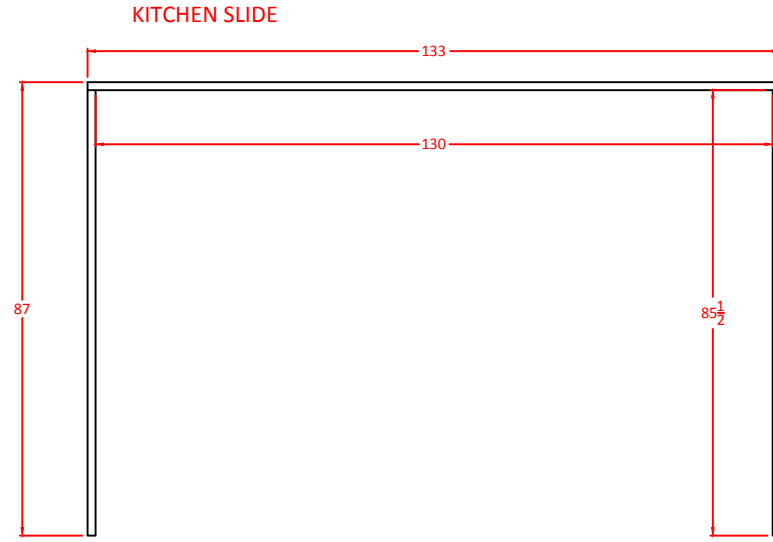
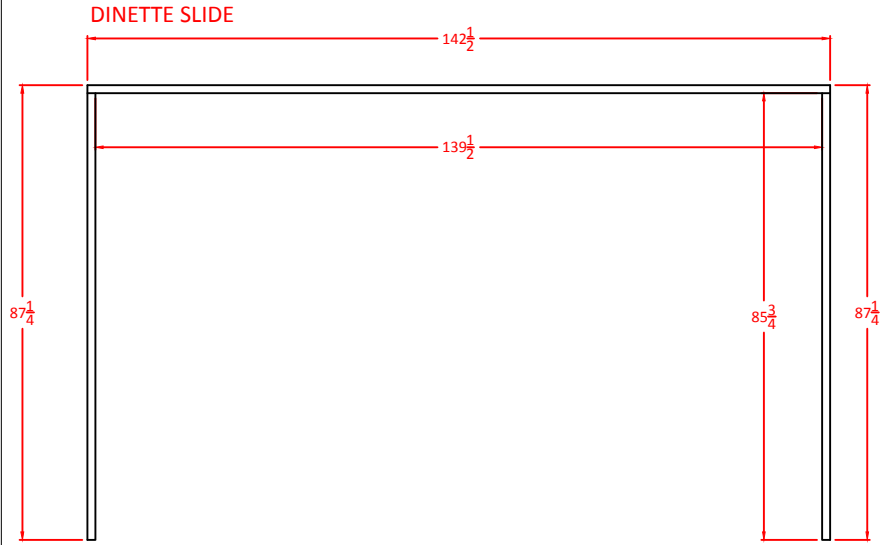


PASSENGER SIDE  
ANGLE SUPPORT



DRIVER SIDE  
ANGLE SUPPORT





Page #

Rev #

Date

09/10/2012

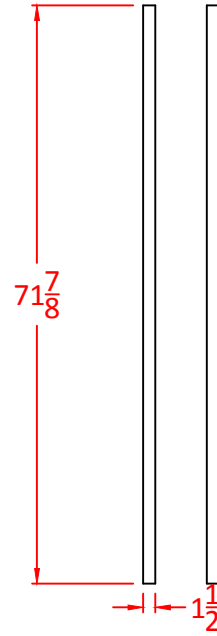
Client

**5th Wheel Travel  
Trailer Frame**

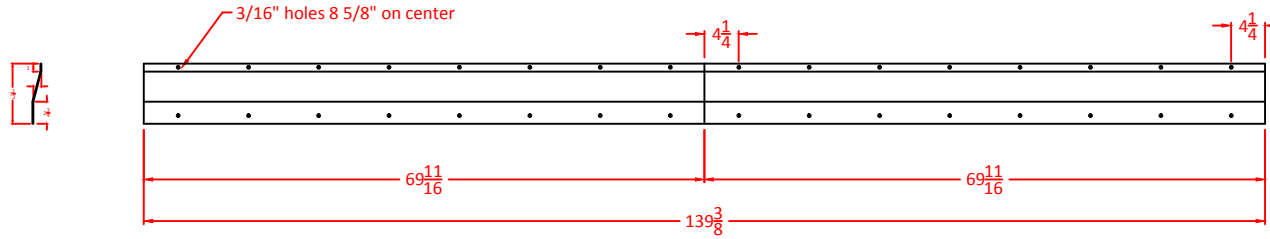
Details:

**Creation**  
- Design, Drafting & Consulting  
www.creationdrafting.com  
email: art@creationdrafting.com  
Ph. 778-476-5799

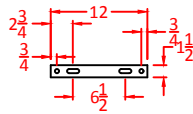
BED SLIDE  
X2 -RAILS



LEVEL FLOOR PLATE  
10 GAUGE GALVANIZED STEEL



BED SLIDEOUT MOUNTING BRACKETS - TWO PER UNIT  
1/8" PLATE STEEL

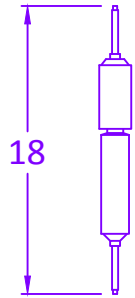


BOLT PACKAGE FOR BED SLIDEOUT:

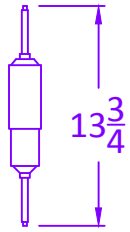
- ④ 3/8" BOLTS X 1 1/4"
- ④ 3/8" BOLTS X 2 1/4"

THE ABOVE REQUIRE WASHERS AND LOCK WASHERS  
② 3/8" BOLTS X 4"

FULLY EXTENDED

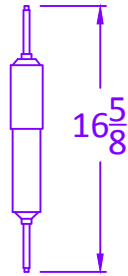


FULLY COMPRESSED

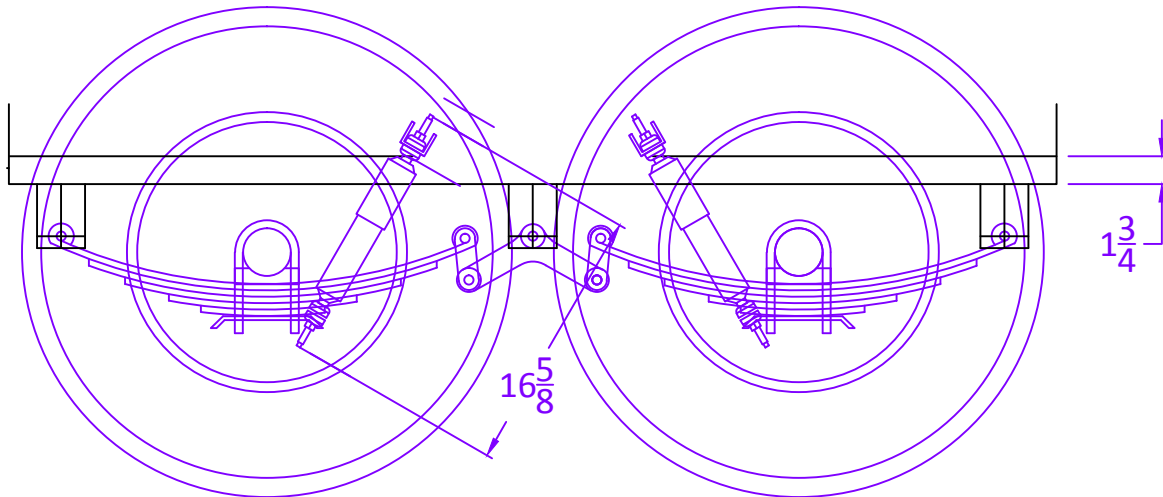


4 1/4" TRAVEL

DIMENSION WHEN INSTALLED WITH ONLY FRAME WEIGHT ON SHOCK



THIS WILL ALLOW THE AXLES TO DROP 1 3/8" WHEN ALL WEIGHT IS OFF THE TIRES OR CONTRACT 2 7/8" UNDER MAX LOAD AND HITTING A BUMP



MOUNT SHOCKS ON 60° ANGLE

TOP MOUNTING BRACKET SHOULD BE WELDED IN AT 1 3/4" BETWEEN THE BOTTOM OF 2 X 5 MEMBER AND THE LOWEST CORNER OF MOUNTING BRACKET

Page #

Date

Rev #

09/10/2012

Client

Details:

5th Wheel Travel Trailer Frame

Creation

-Design, Drafting & Consulting  
www.creationdrafting.com  
email: art@creationdrafting.com  
Ph. 778-476-5799